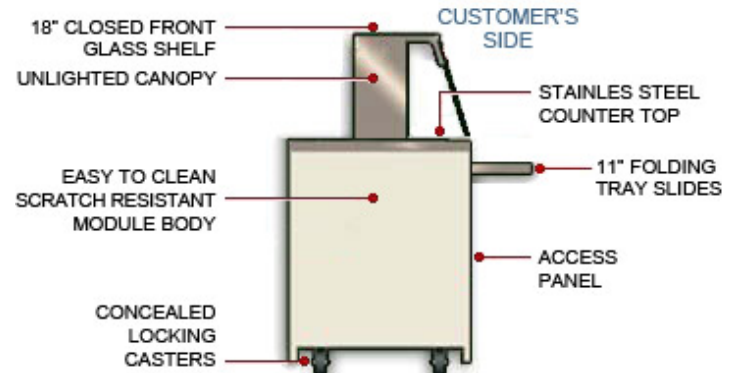




Model Number & Name
9039W/MH/5238-05/8774

Induction Cooking Station With Two Induction Cookers, NSF4, 50", 208V-240V, Dove White, MateLock Ends, Closed Front Food Protector, Breath Shield, Unlighted, (1) 11" Tray Slide




Technical Information

Components

9330W/MH/5238-05/8774/P50/8968/8968/C

Model Features

- Counter Tops Are Heavy Duty 14 Gauge 304 Stainless Steel With A #4 Polished Shine, Sanitary Finish (No Pits)
- The Top Is Turned Down On All Sides And All Corners Are Fully Welded, Ground And Polished Smoothly
- Fire Retardant ABS Thermoplastic Body Is Mounted To A Heavy Gauge Steel Frame
- ABS Is UL Certified To Limit Surface Flammability, Smoke Generation, Toxic Gas Generation, And Low Flammability
- Facade Has Attractive Recessed Panels For The Addition Of Optional Laminate Panels
- Optional Decorator Laminate Panels Are Available In Many Colors And Wood Grains To Enhance Your Location
- Extremely Dent And Scratch Resistant Body With Color All The Way Through
- Scratches Will Be Difficult To See Because The Color Is Through And Through - [View All Color Options](#)
- All Materials Have NSF Approval For Cleanliness Making Them Easy To Clean - No Hidden Nooks Or Crannies - Retards Mold And Bugs
- No Sharp Edges Or Exposed And Unsightly Latches To Snag Clothing
- Under Shelves Are Heavy 16 Gauge Stainless Steel With A Bright #4 Finish And Are Easily Adjustable Up And Down - [Under Shelves Optional](#) Unless Otherwise Noted
- Delivered Fully Assembled With All Accessories Mounted And Wired To A Single Cord And Plug
- Modules Bear The Underwriter's Laboratories UL Label For Electrical And Fire Safety
- Modules Bear The National Sanitation Foundation Label For Health And Temperature Performance
- Compliance With Sanitation Standards Is Confirmed By A Listing On The [NSF Web Site](#)
- Pans Are Optional
- Proudly Manufactured In The USA 
- 4" Dia. Concealed Lock-In-Place, Plate Mounted, Non-Skid Casters Provide For Easy Mobility



of Hot Wells (Steam Wells)

2 Induction Cooktops

Hot Well Features

- Self-Contained Mobile Induction & Demonstration Cooking Station
- Two Induction Cookers Allow Two Separate Recipes To Be Cooked Simultaneously
- Thermostat Adjusts Temperature Per [NSF 4 Standards](#)
- Tamper-Resistant Controls Are On Rear Of Buffets Hidden From Customer View & Won't Snag Clothes
- **Buffets Installed Against A Wall Should [Move Controls To The Front](#) (Add SKU 8510A To Cart)**

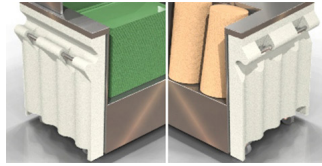
Counter Top Height

36" Standard Height

Serving Counter Description

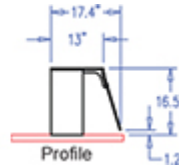
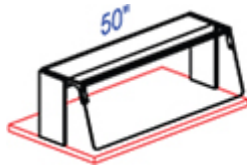
Galley Model # 9039W - Induction Cooking Station With Two Induction Cookers, NSF4, 50", 208V-240V, Dove White, MateLock Ends

End Panel Description



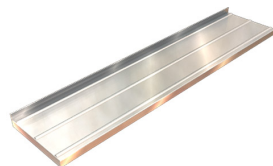
- [Self-Locking MateLock Ends With Push Pull Handles](#)
- Patented Matelock System Self-Aligns & Locks To Other Matelock Modules Without Using Latches
- (4) Pouch Style Stainless Steel, Recessed, & Concealed Handles Provide Easy Portability
- Integrated Modular System Saves Labor Time During Set Up & Breakdown
- One Person Can Setup A Permanent Looking Serving Line In Minutes

Canopy Features



- Buffet Canopy Is Unlighted
- Single Deck Glass Shelf 17" High x 13" Deep - [View Profile Of Canopy Dimensions](#)
- Closed Front Food Protector Blocks Customers Access To Food | Server Required
- Breath Shields Are Installed On One Side - [Side Breath Shields Are Optional](#)
- "See-Thru" Breath Shields Have Swing And Lift Up Polished 1/4" Thick Tempered Safety Glass With Radius Corners
- Server Reach-In Opening Is 17" | Front Food Protector Is Flush With Front Of Module
- Air Gaps Exist At The Front To Allow Air Circulation, Minimizing Condensation On The Glass
- Flat Tempered Safety Glass Shelf With Sloped Front Tempered Safety Glass Is Mounted On Stainless Steel Pylon
- Top Flat Glass Serving Shelf Remains Cool And Can Be Used As A Display Area For Snacks Or Literature
- Materials Meet [NSF 2 Standards](#) For Cleanability
- Canopy Is Factory Installed And Shipped Mounted On The Base Module
- All Edges Are Polished
- Galley Model #5238-05

Plate Rest / Tray Slide Description



- 11" Fold-Down Tray Slide - Mounted On Front Side (Galley Model #8774, QTY. 1)

Overall Dimensions

50" Wide x 52.5" High x 39" Depth (127 cm Wide x 133.4 cm High x 99.1 cm Depth)

Closure Panel Location

Closure Panel On Front, None On Rear


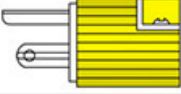
Volts / Cycles / Phase

208-240/50-60/1

Amps

30

NEMA Plug Provided

PLUG TYPE	SPECIFICATION	END VIEW	SIDE VIEW
6-20P	2 Pole 3 Wire Grounding 250 Volt 20 Amp		

• (2) 6-20P

Power Cord and Plug Length	9.5 ft
Watts	6000
Electrical Control Location	Server's Side (Rear of Module)
Construction Materials	Stainless Steel, ABS Composite, Tempered Safety Glass
Warranty (See Full Policy in Resources)	365 Days Parts & Labor
Manufacturer	GalleyLine [®] by Galley Inc. info@GalleyLine.com 561-748-5200
Weight (lbs.)	597
Model Number (SKU) - Original	9039W/MH/5238-05/8774,9039W/MH/5238-05/8774/P50/C
Freight Class	100